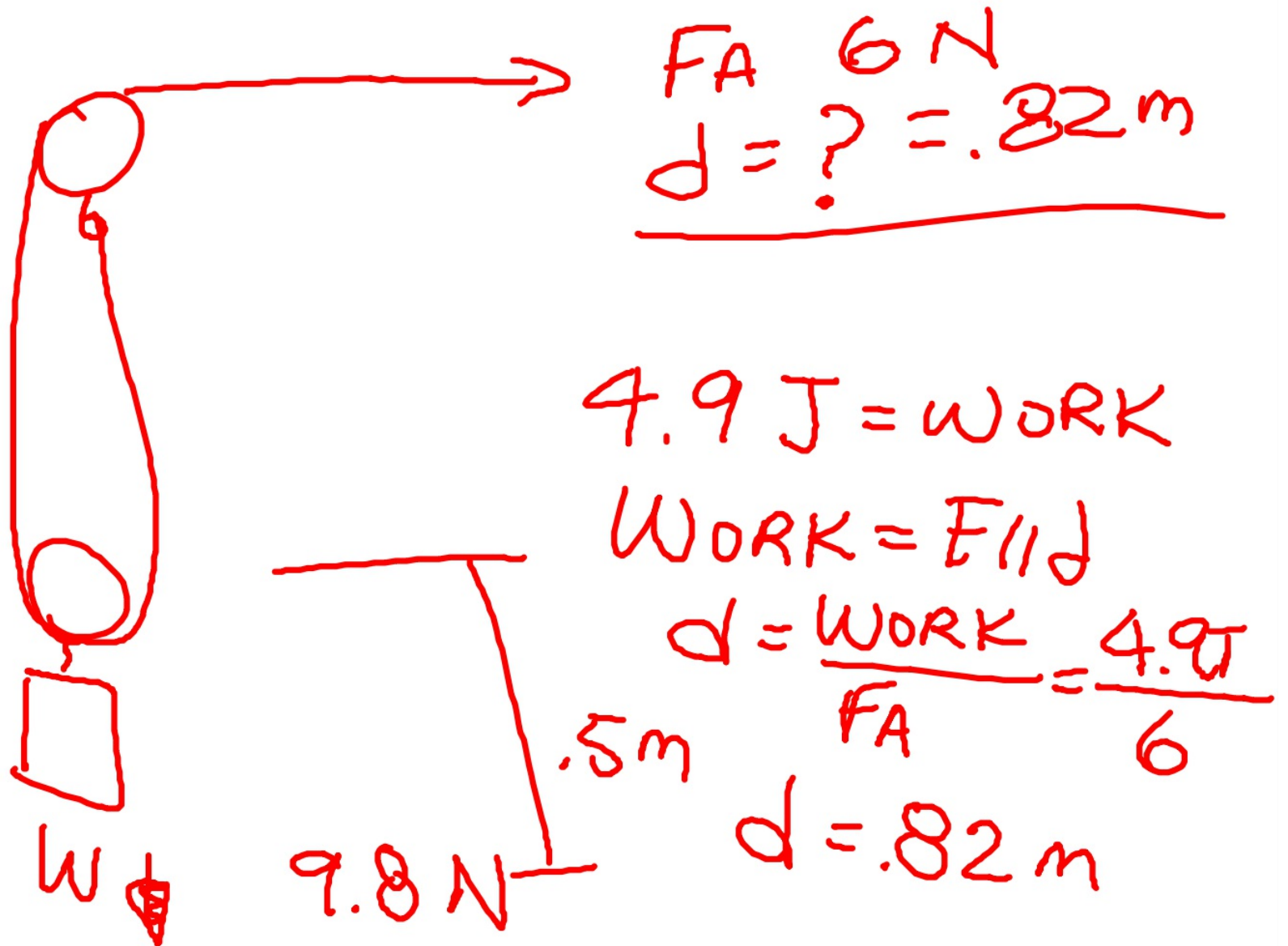


$$W = mg = (1 \text{ Kg})(9.8 \text{ m/s}^2)$$

$$W = 9.8 \text{ N}$$





distance is Longer BUT
the FORCE is LESS

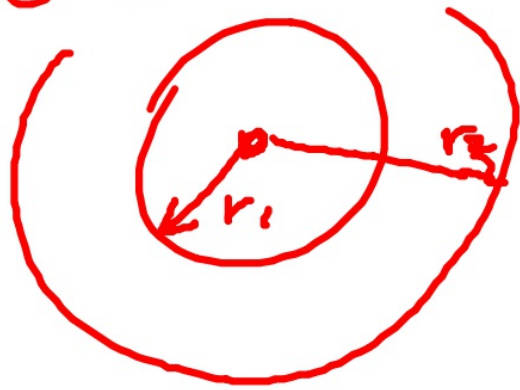
AS A RESULT Power is
ALSO LESS because the
 Δt is more.

SCREW



Changing
CIRCULAR motion
(TORQUE)
to
Linear motion

Wheel + AXLE



CIRCULAR
motion +

Changes it to

Linear motion

$r_1 \Rightarrow \text{Circumference} = \text{distance}$
travelled

LARGER RADIUS the further it
will go

Wedge - used for cutting

